

The logo for SIYAPHAMBILI electrical features a stylized lightbulb icon with radiating lines above the word "SIYAPHAMBILI". The letters "SIYA" are in white, "PHAMBILI" is in red, and "electrical" is in white lowercase letters below. The entire logo is set against a black rounded rectangular background.

**SIYAPHAMBILI**  
*electrical*

***Company Profile***

## About Us

- Type of firm - Electrical Contractor
- Activities - Professional Service Provider
- BEE - Yes
- Types of contracts - Office Parks  
Shopping Centre's  
Schools  
Hotels  
Industrial Factories

## Types of Services

- General
  - Electrical
  - Maintenance
- Re lamping
- Industrial and commercial
- Installation
- Certificate of compliance

# Black Economic Empowerment

Siya Phambili Electrical was solely opened by Mr. S. Moodley.

As the empowerment and equity requirements changed, numerous options were considered and it became clear that the only way to structure the empowerment/equity within Siya Phambili was to give back to those members of staff who made the business possible.

It was therefore decided that shares would be available to qualifying staff members with an initial maximum amount of 25%.

The management and staff are extremely excited about this venture because all staff would benefit from it.

# Organisation Structure, Infrastructure, Policy and Compliance

Siya Phambili Electrical is a member of a recognized electrical contractors association.

## Quality management in our company:

- Siya Phambili Electrical is a medium to large enterprise business.
- We believe in putting in extra effort to retain business

# Organisation Structure, Infrastructure, Policy and Compliance

## **Siya Phambili Electrical core business:**

- Contractual electrical services

## **Period of being in business**

- 6 years

## **Company financially viability**

- Siya Phambili Electrical can easily obtain financial backup from our banking institutions.

## Insurance & Public Liability

Siya Phambili Electrical has insurance coverage for R3 million and should we obtain a contract where we need more coverage, its easy to obtain.

## Legislated Levies

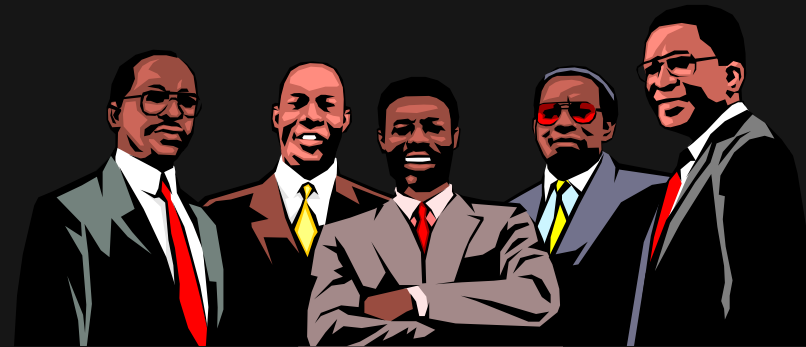
Leave Pay	-	21 days annual leave
Sick Leave	-	4% of the monthly basic wage
UIF	-	1% of the monthly basic wage
Annual Bonus	-	Monthly wage rate
Uniform	-	2 sets per employee
Skills & Development	-	1% of the organizations Remuneration bill
Workman's Compensation	-	4%



## Employee Rights

Siya Phambili Electrical liaise on a regular basis with our staff.

Regular employee/workers forum meetings are held.



## Benefits of Using Us

Siya Phambili Electrical will:

- Select and employ electrical staff suited to your specifications.
- Enter into discussions to take over staff, in line with statutory regulations.
- Handle all discipline, industrial relations, recruitment, etc.
- Be responsible for CCMA/Arbitration cases.
- Be responsible for on-site training and preparation of associated doc.
- Staff will be trained in the usage of tools and equipment provided.
- Your higher standards of electrical maintenance as our focus and function is not divided.
- Ensure that the levels of effort is maintained and the expected results are achieved.
- Provide relief staff when permanent personnel go on leave.

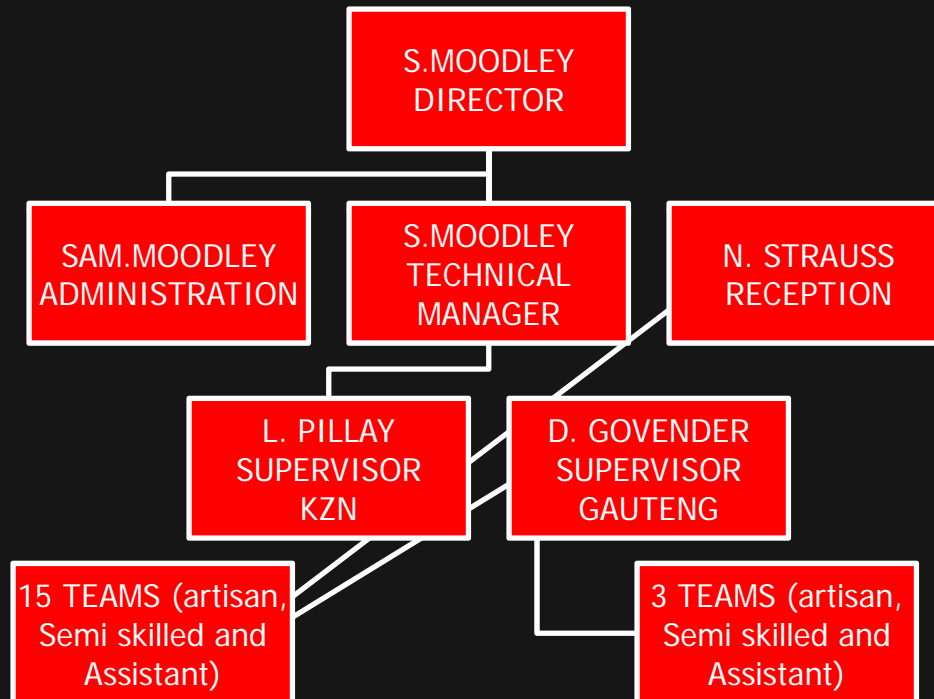
## Materials

Our materials are environmentally friendly and bio-degradable.

Only SABS approved materials are used.



# Organisational Structure



## Contact Us

### Durban

167 Voortrekker Street, Jacobs  
P.O. Box 18279, Dalbridge, 4014  
Tel: (031) 4613423  
Fax: (031) 4613424  
Email: [siyaelec@telkomsa.Net](mailto:siyaelec@telkomsa.Net)

### Johannesburg

18 boulevard, Atlasville, Benoni  
Cell: 0826588767